



SPMX Process Monitoring System

Get real-time visibility into your automated manufacturing process

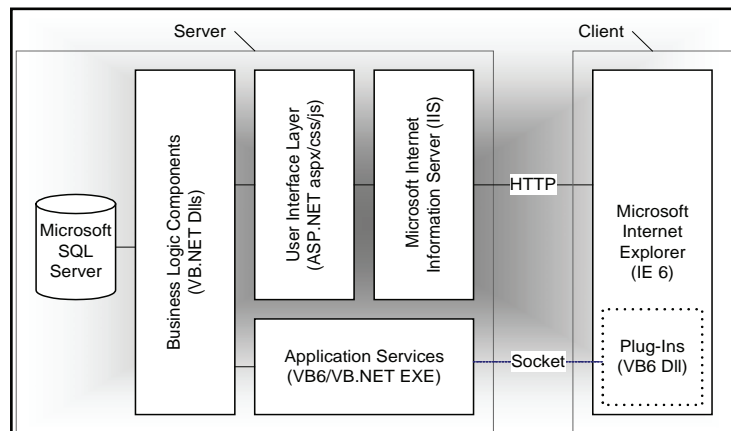
Introducing SPMX, a process monitoring system designed specifically for assembly and test automation. SPMX overcomes the limitations of other systems in terms of focus and flexibility of use, and is built on the .NET platform for stability and security.

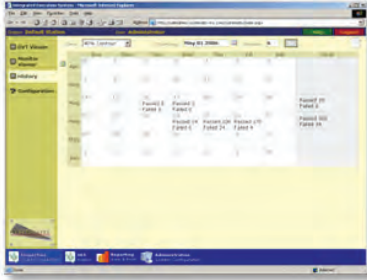
SPMX advantages include:

- *Affordability* - an option on all Systematix automated systems
- *Modularity* - for individual or multiple automated lines
- *Configurability and flexibility* - creation of custom reports by authorized personnel
- *Accessibility* - accessible anywhere on a corporate network or web-enabled device
- *Data archiving* - self-maintaining archive with parameters set by the user
- *Knowledge archiving* – knowledge library on fault recovery, best practices, etc.
- *Security* – defined authorization levels (users, groups, or stations)

Functions include activity logs, statistical analysis, part tracking, data acquisition, data archiving and activity-date-time stamping.

SPMX uses web-based architecture for ease of deployment and personalization. ActiveX plug-ins are used to extend the browser's functionality e.g., for vision data viewing. Servers have been written for many common devices such as cameras, servers and A/D converters for many types of sensors.

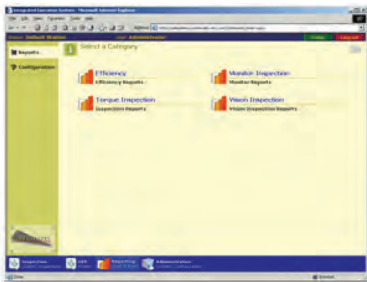




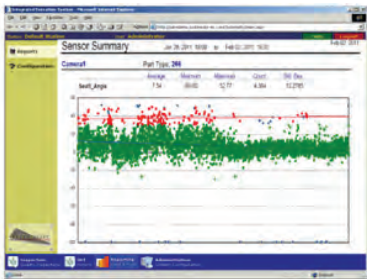
The SPMX calendar view provides access to the day's or week's detailed process records. A wide variety of overview and detailed process screens can be accessed with this view.



The SPMX searchable knowledge base can accommodate text, files or CAD drawings from all sources. It is organized around "how-to", "problem solving" and "open issue" views. Each entry is logged by date, time, authorship and in the case of open issues, by issuer, assignee and status.



SPMX uses Crystal Reports to generate data files which can be viewed on-screen, by e-mail or by printer. Report categories are limited by user security level. Both standard and custom reports are enabled. With the vision viewer, images can be accessed by highlighting features inspected and tolerances.



SPMX reports both planned, run time and historical results. Examples include: fault data by station or by fault; part quality data and count by cell or defect; cycle and OEE data by cell or system; planned and actual production schedule; pivot tables of sensor data; time series or distribution analysis.

For tighter control of your automated manufacturing give us a call or set-up an appointment for a live demonstration

Systematix Inc. 50 Frobisher Drive, Waterloo ON
Tel. 519-747-9555 or sales@systematix-inc.com

